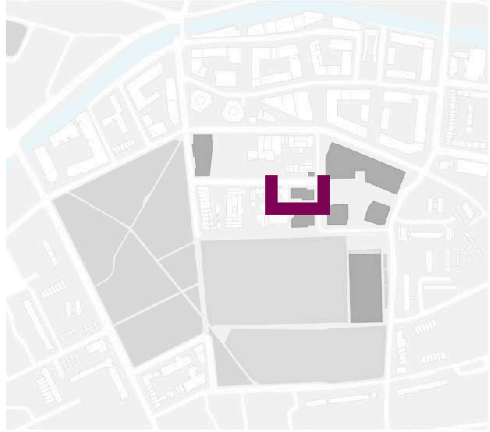


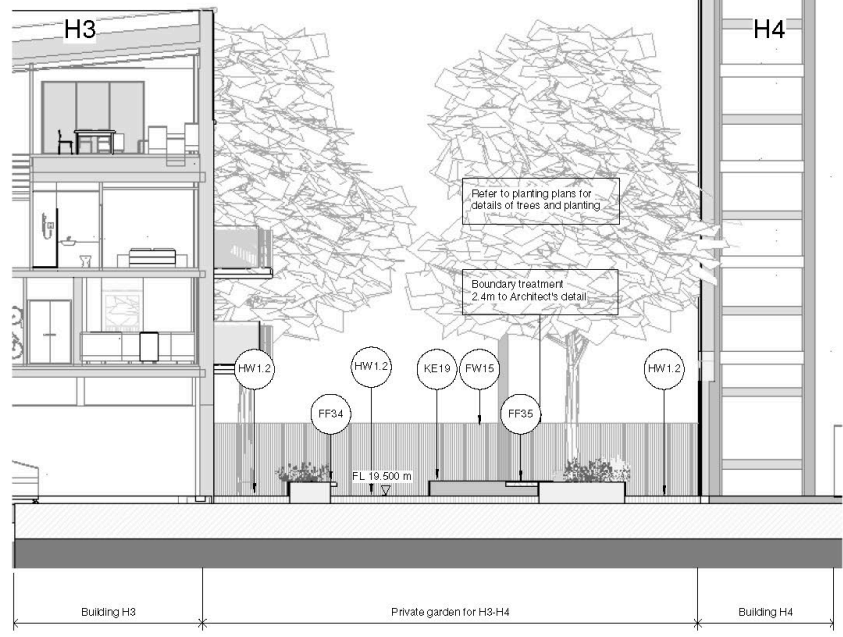
5 Landscape

5.5 Residential Courtyard Garden



1. Residential - Landscape Sections CC

1:100



2. Residential - Landscape Sections AA

1:100



5 Landscape

5.6 Residential Roof Level

A residents garden is located on the roof level of H5 and H6. The garden is accessed from the core of the building. The design looks to create an intimate, secure communal garden space for residents to enjoy views over Shoreditch Park to the south.

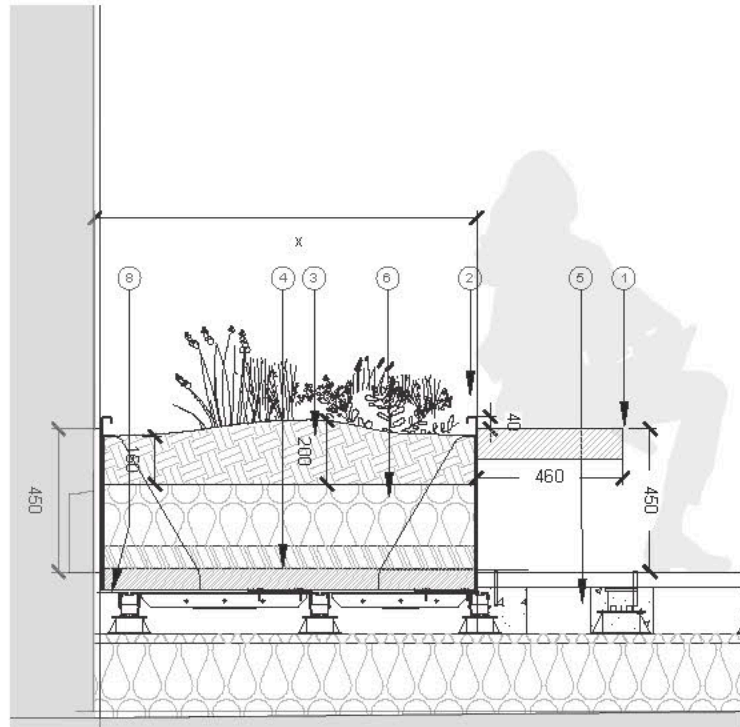
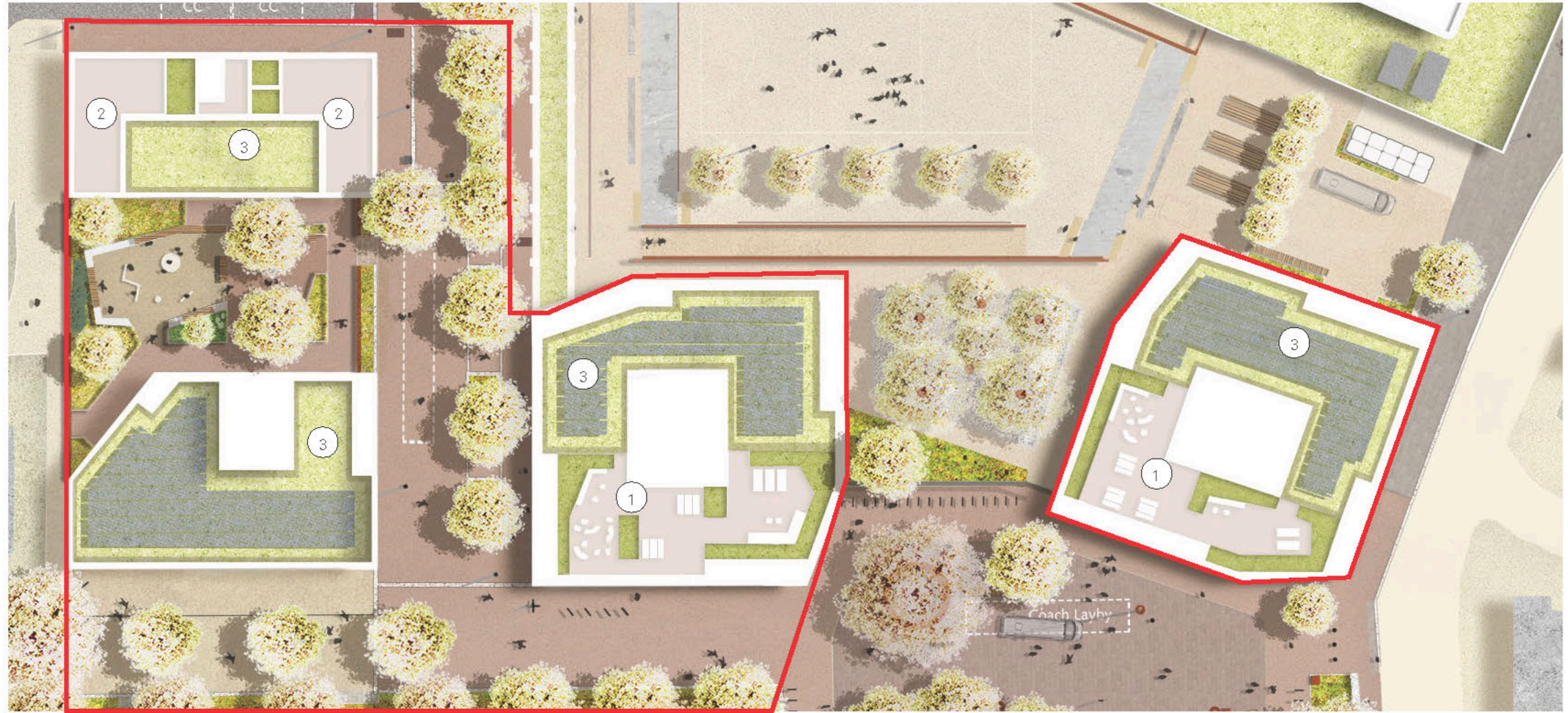
Seating is positioned in sheltered locations and framed by greenery and small ornamental trees to provide a series of intimate spaces to allow more than one group or individual to enjoy the space at any one time. A planting bed to the west of H6 to provide privacy to adjacent school. Planting will consist of a mix of grasses and perennials that will bring colour and movement to the garden and tolerate dry weather conditions.

H3 has 2 private roof terraces that are accessed directly from the apartments.

At roof level the design takes the opportunity to introduce a biodiversity roof to H3, H4 and the northern sides of H5, H6 to support flora and fauna.

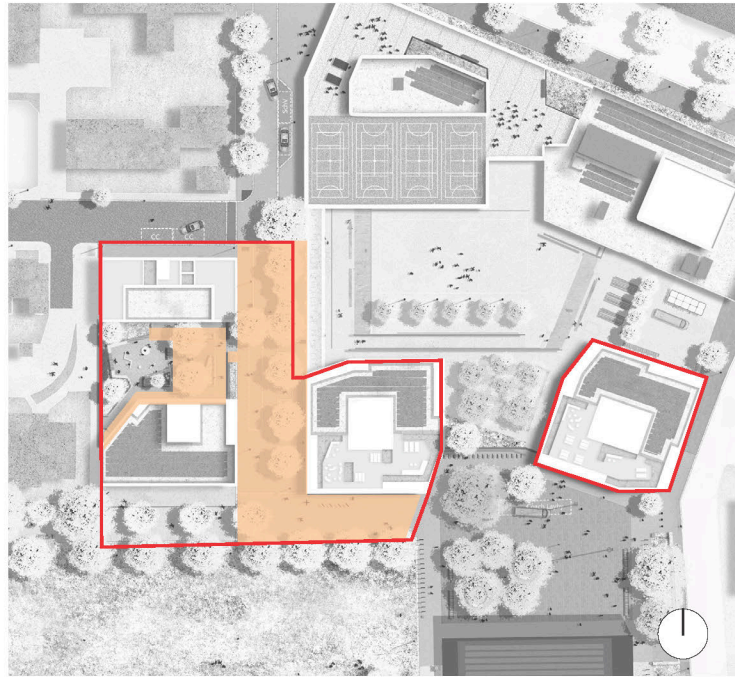
Key

- 1. Roof terrace for residents
- 2. Private terrace to H3
- 3. Biodiversity Roofs



5 Landscape

5.7 Materials Strategy



Exposed Aggregate Concrete, to match phase 1

Natural Stone Smaller Unit. Colour mix to match phase 1. With natural stone kerb edging as phase 1.


Natural Stone Larger Unit. Colour mix to match phase 1. With natural stone kerb edging as phase 1.

Suitable surface for play – to be agreed

5 Landscape


5.8 Street Furniture




 Bench with back and arm rests as Phase 1

 Resin bound tree grill to match Phase 1 on Hyde Road

 Sheffield Cycle Stands

 Informal play for younger children H3 H4 courtyard

 Seating in courtyard with back and arm rests